

# PERMCO

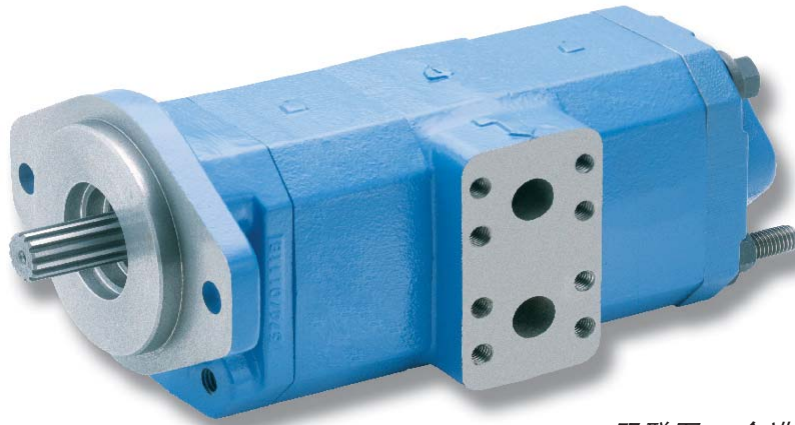
# 124 系列

## 齿轮泵及马达

高压小排量滑动轴承齿轮泵及马达

### PUMPS AND MOTORS

HIGH PRESSURE SMALL DISPLACEMENT SLEEVE BUSHING PUMPS AND MOTORS



双联泵 一个进油口/两个出油口  
TANDEM SINGLE INLET/DUAL OUTLET

#### 特点

- 结构小巧的重载轴套设计
- 排量从10.16至40.62ml/r
- 工作压力可达到28Mpa
- 工作转速可达3000r/min
- 流量可达114LPM
- 销轴联接的高强度铸铁结构
- 100%出厂检测
- 高强度合金钢齿轮和齿轮轴
- 有背泵和风扇马达可供选择
- 油口、安装形式和轴有多种设计可供选择
- 在整个工作过程中，压力平衡耐磨侧板可使泵始终保持高效率输出
- 有单进油/单出油、单进油/双出油的中间体可供选择

#### FEATURES

- Heavy duty sleeve bushing design in a small frame size
- Cubic inch displacement from 0.62 through 2.48
- Working pressure up to 4000 PSI
- Speeds up to 3000 RPM
- Flows up to 30 GPM
- Doweled and high strength cast iron construction
- 100% factory tested
- High strength alloy steel gear and shaft sets
- Available as a piggy back pump and fan drive motor
- A wide range of porting, mounting and shaft options available
- Pressure balanced wear plates maintain high pump efficiency throughout all operating ranges
- Both single inlet/single outlet and single inlet/dual outlet bearing carriers available

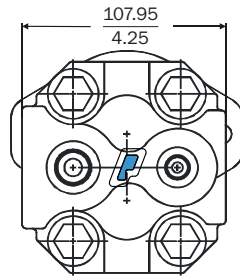
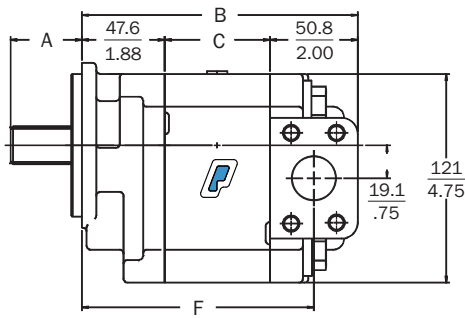


单泵  
SINGLE

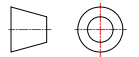
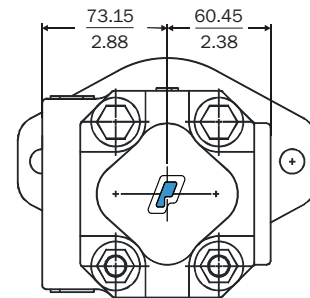
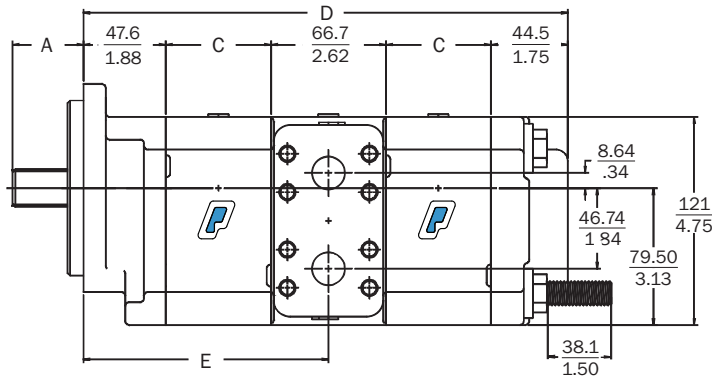


## The Sensible Choice

# 124 系列尺寸数据 (mm/in) DIMENSIONAL DATA (mm/in)



- A. SAE "B" shaft shown, other shafts available  
图示为SAE "B"轴伸, 轴伸型式有多种选择
- B. 4.27" plus gear width  
108.56 mm 加齿轮宽度
- C. 0.4" plus gear width  
10.16 mm 加齿轮宽度
- D. 7.05" plus total gear width  
179.12 mm 加总齿轮宽度
- E. 3.59" plus front gear width  
91.11 mm 加前齿轮宽度
- F. 3.27" plus gear width  
83.16 mm 加齿轮宽度



## 性能 PERFORMANCE

### 齿轮泵 Gear Pumps

Displacement 排量 ml/rev	Gear Width 齿宽 Inch 英寸	Rated Pressure 额定压力 MPa	Max Pressure 最高压力 MPa	Working Speed RPM 工作转速 转/分		Input Power 输入功率 KW
				Max 最高	Min 最低	
10.16	1/2"	25	28	3000	600	13.4
15.23	3/4"	25	28	3000	600	20.0
20.31	1"	25	28	3000	600	26.7
25.39	1-1/4"	25	28	3000	600	33.4
30.47	1-1/2"	21	25	3000	600	33.7
35.54	1-3/4"	18	21	3000	600	33.7
40.62	2"	18	21	3000	600	38.5

### 齿轮马达 Gear Motors

Displacement 排量 ml/rev	Input Flow 输入流量 2000 RPM LPM	Gear Width 齿宽 Inch 英寸	Rated Pressure 额定压力 MPa	Max Pressure 最高压力 MPa	Output Speed RPM 输出转速 转/分		Output Power 2000 RPM 输出功率 KW	Output Torque 输出扭矩 N-m
					Max 最高	Min 最低		
10.16	22.6	1/2"	21	25	3000	600	6.4	30.5
15.23	33.8	3/4"	21	25	3000	600	9.6	45.8
20.31	45.1	1"	21	25	3000	600	12.8	61.1
25.39	56.4	1-1/4"	21	25	3000	600	16.0	76.3
30.47	67.7	1-1/2"	18	21	3000	600	16.5	78.5
35.54	79.0	1-3/4"	18	21	3000	600	19.2	91.6
40.62	90.3	2"	18	21	3000	600	21.9	104.7

Permco USA  
1500 Frost Road  
P. O. Box 2068  
Streetsboro, Ohio 44241  
www.permco.com  
E-mail: info@permco.com  
Copyright © 2007

Permco (TianJin) Hydraulic Inc., Ltd.  
泊姆克 (天津) 液压有限公司  
236 Jinbindadao Free Trade Zone  
保税区津滨大道236号  
TianJin Port, China PC: 300461  
中国天津港 邮编300461

Tel: 022-25761959  
Fax: 022-25767035, 25761939  
www.permcotj.com  
E-mail: permco@permcotj.com  
info: technic@permcotj.com

Permco TianJin Fluidpower Mfg. Co. Ltd.  
泊姆克天津流体动力制造有限公司  
Fenghua Industrial Park 9th Avenue  
第九大街丰华工业园  
TEDA, China PC: 300457  
中国天津经济技术开发区 邮编300457